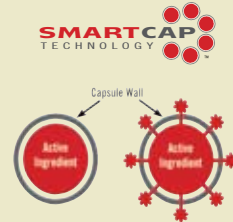


Microcare® 3% CS

Controlled Release Pyrethrins

High Performance Pyrethrum Featuring SmartCap™ Technology

Microcare 3% CS is the only microencapsulated pyrethrum product that provides quick knockdown and residual control in and around residential and commercial structures. It features SmartCap Microencapsulation Technology that disperses an effective barrier of insect killing pyrethrum capsules over the application area for increased pest exposure and residual. Exclusive SmartCap Technology creates a shell around the active ingredient (a.i.) that increases residual control by protecting it from ultra violet rays, weather, porous and greasy surfaces and absorption into soil or organic matter. It also acts as a barrier to diminish exposure to humans and pets while reducing plant phytotoxicity and staining. Through this technology we are able to construct tiny, mobile lethal doses of the a.i. that can attach to and move with insects. The capsule structure is designed to improve performance by shortening contact time and is even small enough to be ingested during grooming.



The capsule wall protects the a.i. from surface conditions and the environment.

The a.i. diffuses quickly out of the capsule when in contact with an insect's exoskeleton.

Ideal for Sensitive Accounts

Microcare 3% CS is a 3.0% pyrethrin and 15% PBO microencapsulation formulation. It is designed as a contact product with residual activity for sensitive environments and customers. It has a CAUTION label with a favorable toxicity profile. **Microcare 3% CS is not labeled for food handling.**

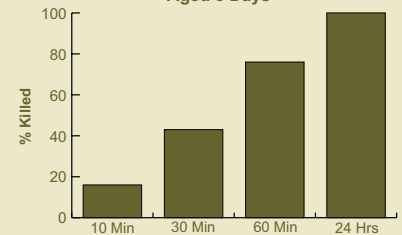
Versatile for Multi-Use Applications

Microcare 3% CS can be applied as a spot treatment and/or ULV/space treatment indoors and outdoors in residential and commercial accounts.

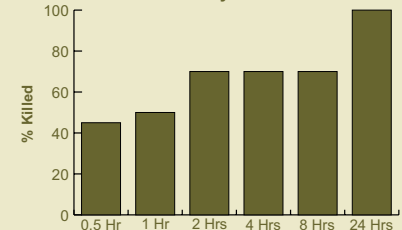
Specifications

Active Ingredient: 3.0% Pyrethrin, 15% PBO
Insecticide Class: Pyrethrum
Signal Word: CAUTION
Food Handling: No
Packed: 4 x 120 oz.; 40 cases/pallet
EPA Registration Number: 499-516
Registration pending in some states. See www.wmmg.com for details.

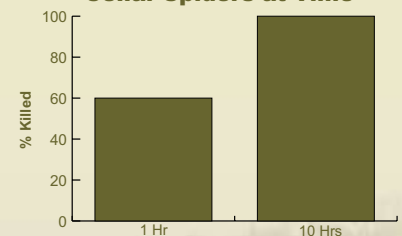
Mortality of Argentine Ants on Tile Aged 3 Days



Mortality of Mosquitoes at Time Day 1



Mortality and Knockdown of Cellar Spiders at Time



Quick Knockdown and Residual Control

Broad Use Label

Calf Hutches, Canneries, Dairies, Grain Mills, Hog Operations, Homes, Horse Barns, Hospitals and Nursing Homes (except patient rooms while occupied), Hotels, Industrial Installations, Kennels, Landscapes, Motels, Non Food Areas of Bakeries, Beverage Plants, Flour Mills, Food Processing Plants, Food Storage Areas, Loafing Sheds, Meat Packing Plants, Milk Rooms, Milking Parlors, Poultry Operations, Restaurants and Supermarkets, Office Buildings, Residences; Schools, Stables, Transportation Equipment [Airplanes (cargo areas only), Boats, Buses, Railcars, Ships, Trailers and Trucks], Warehouses and Zoos



Target Pests

Kills: Angoumois Grain Moths, Ants (excluding Fire Ants, Ants and Pharaoh Ants), Bees, Boxelder Bugs, Cadelles, Carpet Carpenter Ants, Centipedes, Cigarette Beetles, Clover Mites, (German Cockroaches), Confused Flour Beetles, Crickets, Dermestid Beetles, Dried Fruit Beetles, Drugstore Beetles, Flies (Stable Flies), Fungus Gnats, Fungus Gnat Larvae, Gnats, Indianmeal Moths, Mealworms, Mealybugs, Mediterranean Flour Mosquitoes (Southern House Mosquito or Culex Mosquitoes), Flour Beetles, Sawtoothed Grain Beetles, Scorpions, Silverfish, Spiders, Ticks, Trogoderma, Wasps, Weevils (Granary Weevils and Yellowjackets)

© Gene White

© Gene White

Microcare 3% CS Dilution Rate (Indoor & Outdoor)

Microcare 3% CS should always be used according to label directions. Dilution depends upon chosen rate (0.02% or 0.10%), size of the spray tank and desired gallons sprayed per 1000 square feet. Use the chart below to determine the dilution rate. (Please follow mixing instructions on label.)

Microcare CS is labeled for a wide variety of pests which includes ants, spiders, mosquitoes, cockroaches, ticks and more.

Dilution Rates for Indoor Use

Amount of Product	% Pyrethrins to Gallon
5 fl oz	0.10%
4 fl oz	0.08%
3 fl oz	0.06%
2 fl oz	0.04%
1 fl oz	0.02%

Suggested Perimeter Mixing Rates

	Tank Sizes in Gallons (Amount of Concentrate in fl oz)			
	1	3	15	50
Maintenance	1	3	5	10
Clean-Out	2	6	10	20



Quick Knockdown and Residual Control

WHITMIRE MICRO-GEN
Prescription Treatment
Making pest management more profitable.
 800-777-8570 www.wmmg.com